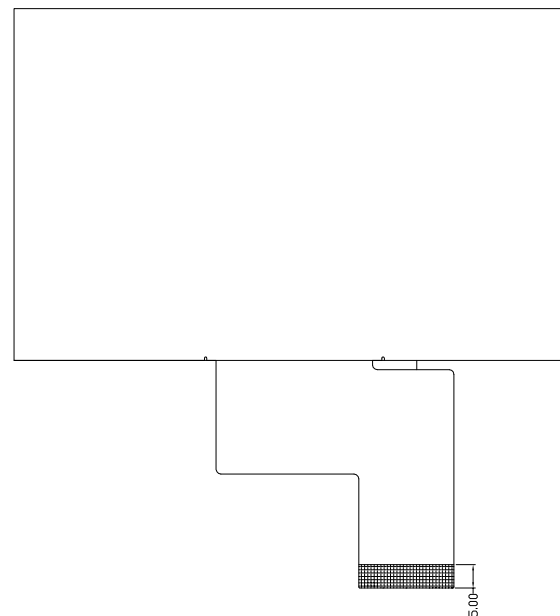
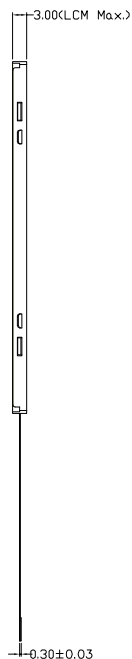
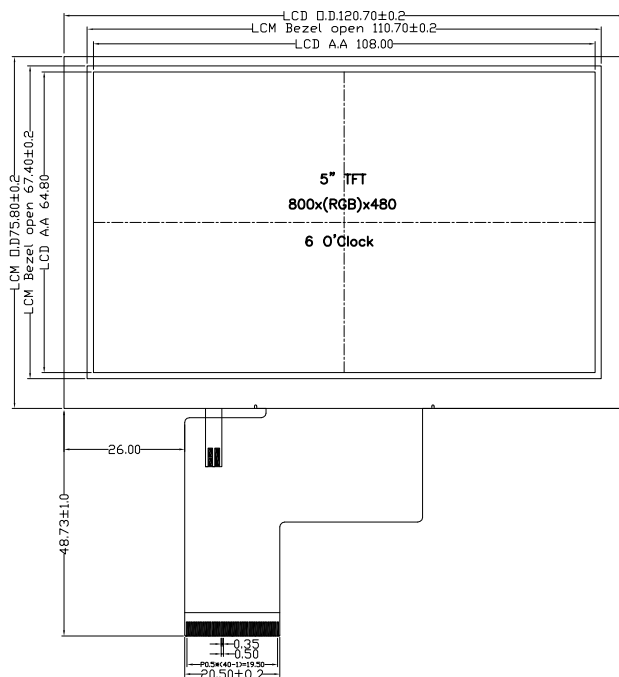


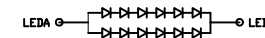
CUSTOMER

CUSTOMER'S CODE

**RoHS**



LCM Pin Define	
PIN NO.	DEFINE
1	GLED
2	VLED
3	GND
4	VDD
5	R0
6	R1
7	R2
8	R3
9	R4
10	R5
11	R6
12	R7
13	G0
14	G1
15	G2
16	G3
17	G4
18	G5
19	G6
20	G7
21	B0
22	B1
23	B2
24	B3
25	B4
26	B5
27	B6
28	B7
29	GND
30	DCLK
31	DISP
32	HS
33	VS
34	DE
35	NC
36	GND
37	NC(XR)
38	NC(YD)
39	NC(XL)
40	NC(YU)



LED CIRCUIT DIAGRAM

**Specification**

1. Display mode: 5" TFT LCD, Transmissive
2. Viewing Direction: 6 O' clock
3. Back-Light: 12 CHIP-WHITE LED, IL=40mA, VL=19.8V
4. Operating temp: -20°C to 60°C , Storage temp: -30°C to 70°C
5. IC NO. : ILI6122/ILI5960
6. Unspecified tolerance : ±0.20mm
7. Remark: RoHS LCD NO.:

**CUSTOMER'S APPROVAL**

**SAZENTO**



Mod.Name SUY050001-080048

SCALE SHEET

NTS 1/1

UNIT	SIZE	DESIGNER	CHECK	APPROVER	FILE NAME
mm	A4	Ken Lin	jack hu	Jason Lu	Count Dwg.