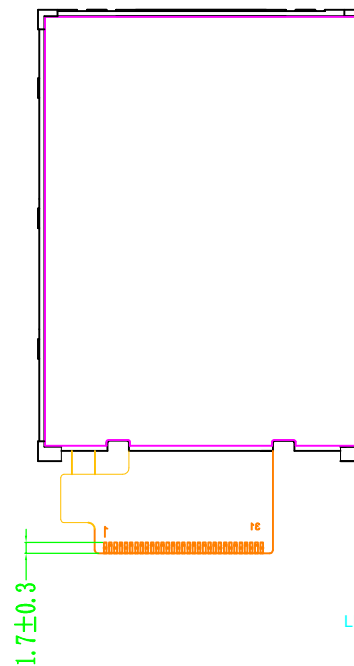
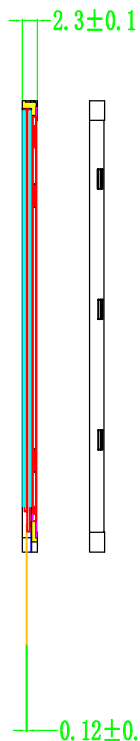
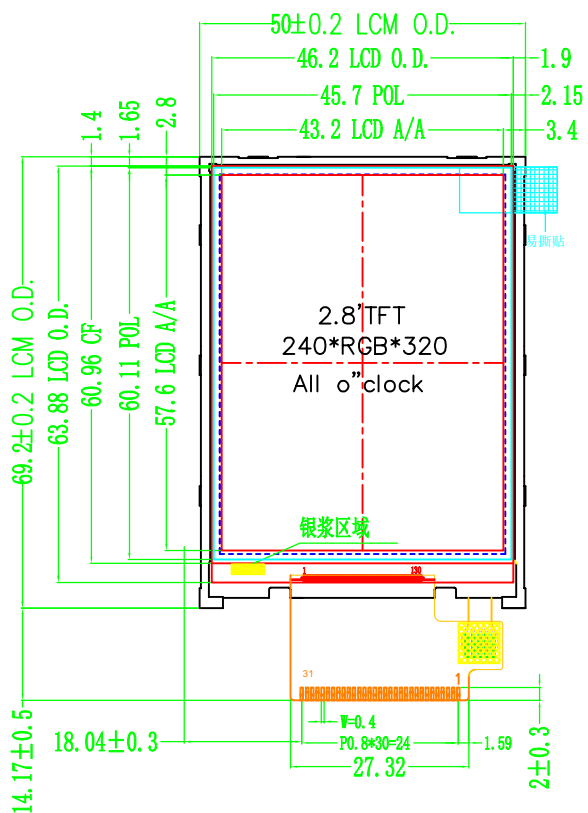


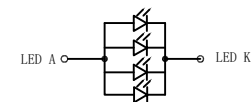
CUSTOMER

CUSTOMER'S CODE

RoHS



LED CIRCUIT DIAGRAM
If I=80mA Vf=3.2V



Pin define	
No.	Symbol
1	LEDK
2	LEDA
3	VCI
4	IOVCC
5	SDI
6	SCL
7	RS
8	CS
9	RESET
10-27	DB17-DB0
28	ENABLE
29	DOTCLK
30	HSYNC
32	VSYNC

Specification

- 1.Display mode: a-Si TFT / Normally White IPS/ TRANSMISSIVE
- 2.Viewing Direction:12 O'clock 3.Power supply voltage: Vdd=3.3V
- 4.Operating temp: -10°C to 60°C , Storage temp: -20°C to 70°C
- 5.DRIVER IC.: GC9307 6.INTERFACE : SPI+RGB 16/18bits Interface
- 7.BACKLIGHT: VF=3.2V(TYP.) IF=80mA 4* White LED
- 8.Unspecified tolerance : ±0.30mm
- 9.Remark: RoHS 10.LUMINANCE: 250 cd/m² (Typ.)

CUSTOMER'S APPROVAL

SAZENTO



Mod.Name		SUY028012-024032			SCALE	SHEET
UNIT	SIZE	DESIGNER	CHECK	APPROVER	FILE NAME	
mm	A4	Ken Lin	jack hu	Jason Lu	Count Dwg.	1/1