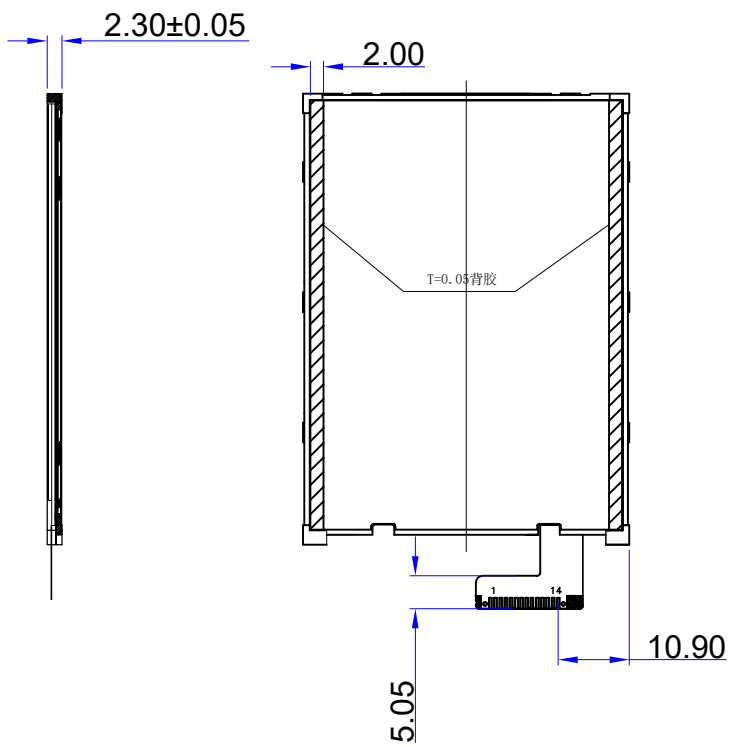
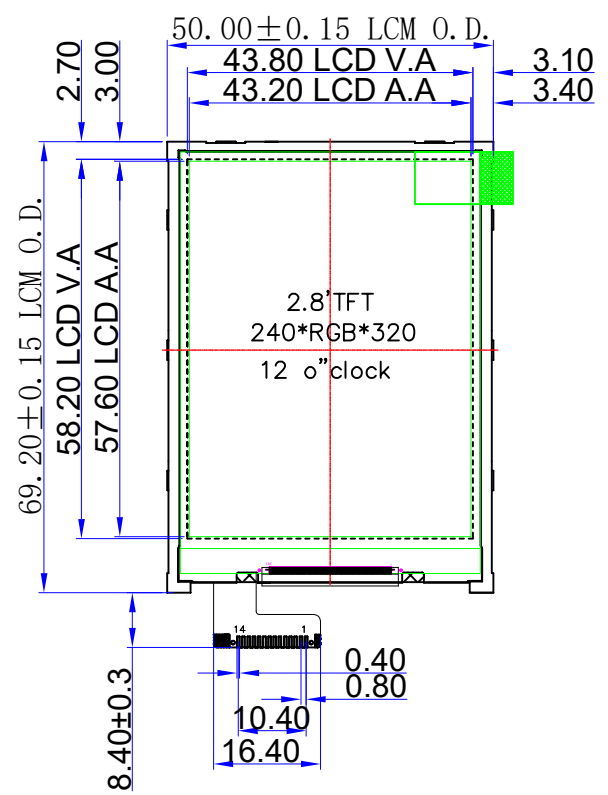


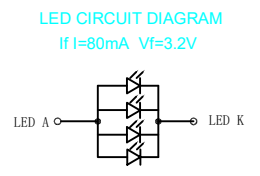
CUSTOMER

CUSTOMER'S CODE

RoHS



Pin define	
No.	Symbol
1	NC
2	GND
3	CSX
4	SCL
5	RS(WRX)
6	SDI/SDA
7	RESX
8	TE
9	IOVCC(1.8V)
10	VCI(2.8V)
11	LED A
12	LED K
13	LED K
14	LED K



Specification	
1.Display mode:	a-Si TFT / Normally White TN / TRANSMISSIVE
2.Viewing Direction:	12 O'clock 3.Power supply voltage: Vdd=3.3V
4.Operating temp:	-20°C to 60°C , Storage temp: -30°C to 70°C
5.DRIVER IC.:	GC9306 6.INTERFACE : SPI Interface
7.BACKLIGHT:	VF=3.2V(TYP.) IF=80mA 4* White LED
8.Unspecified tolerance :	±0.30mm
9.Remark: RoHS	10.LUMINANCE: 250 cd/m ² (Typ.)

CUSTOMER'S APPROVAL

SAZENTO				
Mod.Name		SUY028006-024032		
UNIT	SIZE	DESIGNER	CHECK	APPROVER
mm	A4	Ken Lin	jack hu	Jason Lu

SCALE	SHEET
NTS	1/1
FILE NAME	
Count Dwg.	