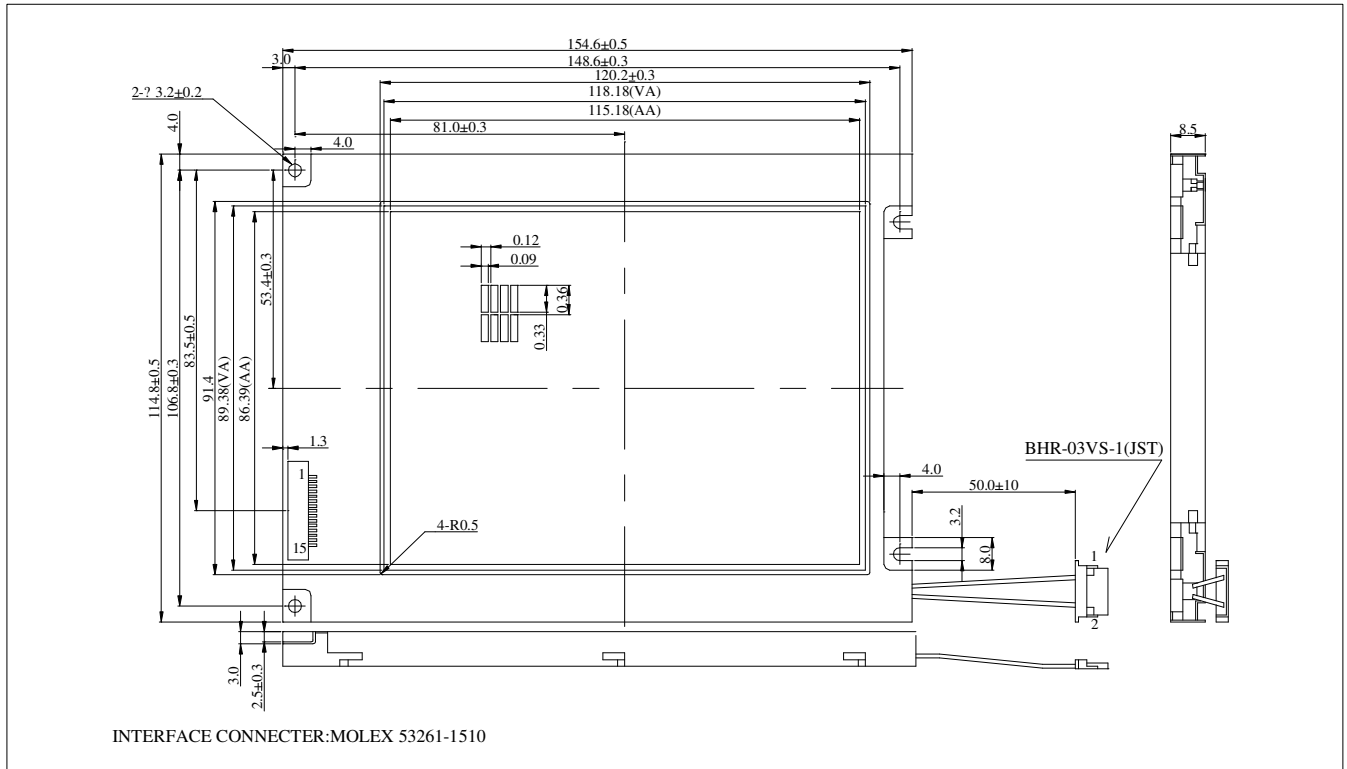


**Dimension**



**FEATURE**

1. 320RGB\*240 dots matrix Color STN
2. Logic Power +5v(+3V) Input
3. None Built in Controller
4. 1/240 Duty signal scan
5. 8bits data bus
- 6.Touch Panel available

**INTERFACE FUNCTIONS**

| Pin NO | Symbol | Function                |
|--------|--------|-------------------------|
| 1      | FLM    | First Line Start Signal |
| 2      | LP     | Data Latch Signal       |
| 3      | CP     | Data Shift Signal       |
| 4      | DISP   | H->Display On           |
| 5      | VDD    | Logic Power +5V         |
| 6      | VSS    | Logic GND               |
| 7      | VLCD   | LCD Operating Volt.     |
| 8      | D7     | Data Bus                |
| 9      | D6     | Data Bus                |
| 10     | D5     | Data Bus                |
| 11     | D4     | Data Bus                |
| 12     | D3     | Data Bus                |
| 13     | D2     | Data Bus                |
| 14     | D1     | Data Bus                |
| 15     | D0     | Data Bus                |

| MECHANICAL DATA  |                |      |
|------------------|----------------|------|
| Item             | Standard Value | Unit |
| Module Dimension | 154.6 * 114.8  | mm   |
| Viewing Area     | 118.18 * 89.38 | mm   |
| Dot Pitch        | 0.12 * 0.36    | mm   |
| Dot Size         | 0.09 * 0.33    | mm   |

| ABSOLUTE MAXIMUM RATING |         |                |     |         |      |
|-------------------------|---------|----------------|-----|---------|------|
| Item                    | Symbol  | Standard Value |     |         | Unit |
|                         |         | min            | typ | max     |      |
| Power Supply            | VDD-VSS | 2.5            | 5.0 | 5.5     | V    |
| Input Voltage           | VIH     | 0.7Vdd         | Vdd | Vdd+0.3 | V    |

| ELECTRONICAL CHARACTERISTICS |        |           |                |      |      |              |
|------------------------------|--------|-----------|----------------|------|------|--------------|
| Item                         | Symbol | Condition | Standard Value |      |      | Unit         |
|                              |        |           | min            | typ  | max  |              |
| Input Voltage                | VDD    | 25°C      | 2.7            | 5.0  | 5.3  | V            |
| Supply Current               | IDD    | 25°C      | 30             | 45   | 55   | mA           |
| LCD Driving Voltage for      | VDD-VO | 0°C       | 26.5           | 27.5 | 28.5 | V            |
|                              |        | 25°C      | 25.0           | 26.0 | 27.0 |              |
|                              |        | 50°C      | 23.5           | 24.5 | 25.5 |              |
|                              |        |           |                |      |      |              |
| CCFL Voltage                 | VF     | 25°C      | 450            | 500  | 550  | VAC<br>50KHz |
| CCFL Tube Current            | IF     | 25°C      | 4.5            | 5.0  | 6.0  | mA           |