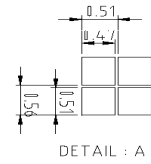
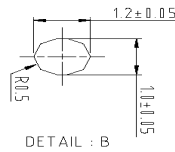


PIN			
PIN	NAME	PIN	NAME
1	/CS1	16	VOUT
2	/RES	17	CAP3-
3	A0	18	CAP1+
4	R/W	19	CAP1-
5	E	20	CAP2-
6	D0	21	CAP2+
7	D1	22	V1
8	D2	23	V2
9	D3	24	V3
10	D4	25	V4
11	D5	26	V5
12	D6	27	VR
13	D7	28	VSS
14	VDD	29	IRS
15	VSS	30	VDD



NOTE:
 1.DISPLAY TYPE : STN/YELLOW GREEN
 2.VIEWING DIRECTION : 6 O'CLOCK
 3.POLARIZER MODE : TRANSMISSIVE/POSITIVE
 4.OPERATING TEMP : -20°C--+61°C
 5.STORAGE TEMP : -31°C--+70°C
 6.OPERATING VOLTAGE : 9.0V
 7.DRIVE METHOD : DUTY 1/64 BIAS 1/9
 8.CONTROLLER : SSD1815BZ
 9.LOGIC POWER SUPPLY VOLTAGE : 3.0V
 10.8-BIT 8080-SERIES PARALLEL INTERFACE

FEATURE

1. STN, Positive, Transflective/Display dot: Black/Background: Yellow-Green
2. IC: SSD1815BZ
3. 1/64 Duty, 1/9 Bias, 6 O'clock.
4. Backlight: NA

Pin NO	Symbol	Pin NO	Symbol
1	/CS1	16	VOUT
2	/RES	17	C3N
3	A0	18	C1P
4	R/W	19	C1N
5	E/RD	20	C2N
6	D0	21	C2P
7	D1	22	V1
8	D2	23	V2
9	D3	24	V3
10	D4	25	V4
11	D5	26	V5
12	D6	27	VR
13	D7	28	VSS
14	VDD	29	IRS
15	VSS	30	VDD

MECHANICAL DATA		
Item	Standard Value	Unit
Module Dimension	77.8(W) X 84.7(H) X 2.95(T)	mm
Viewing Area	74.0 (W) X 40.0 (H)	mm
Dot Size	0.47(W) X 0.51(H)	mm
Dot Pitch	0.51(W) X 0.56(H)	mm

ABSOLUTE MAXIMUM RATING					
Item	Symbol	Standard Value			Unit
		min	typ	max	
Logic Power Supply	VDD-VSS	-0.3		4.0	V
LCD Drive Voltage	Vo-VSS	-0.3		16	V

ELECTRONICAL CHARACTERISTICS						
Item	Symbol	Condition	Standard Value			Unit
			min	Typ	max	
Supply Voltage for Logic	VDD-VSS	25°C	2.4	3.0	3.5	V
SUPPLY Voltage For LCD Drive	Vo-VSS	25°C	8.5	9.0	9.5	V
Input Voltage	VIN	25°C	-0.3		VDD +0.3	V
Current Consumption	ID	25°C		0.68	1.0	mA
Operating Temp	Top		-20		60	°C
Storage Temp	Tst		-30		70	°C