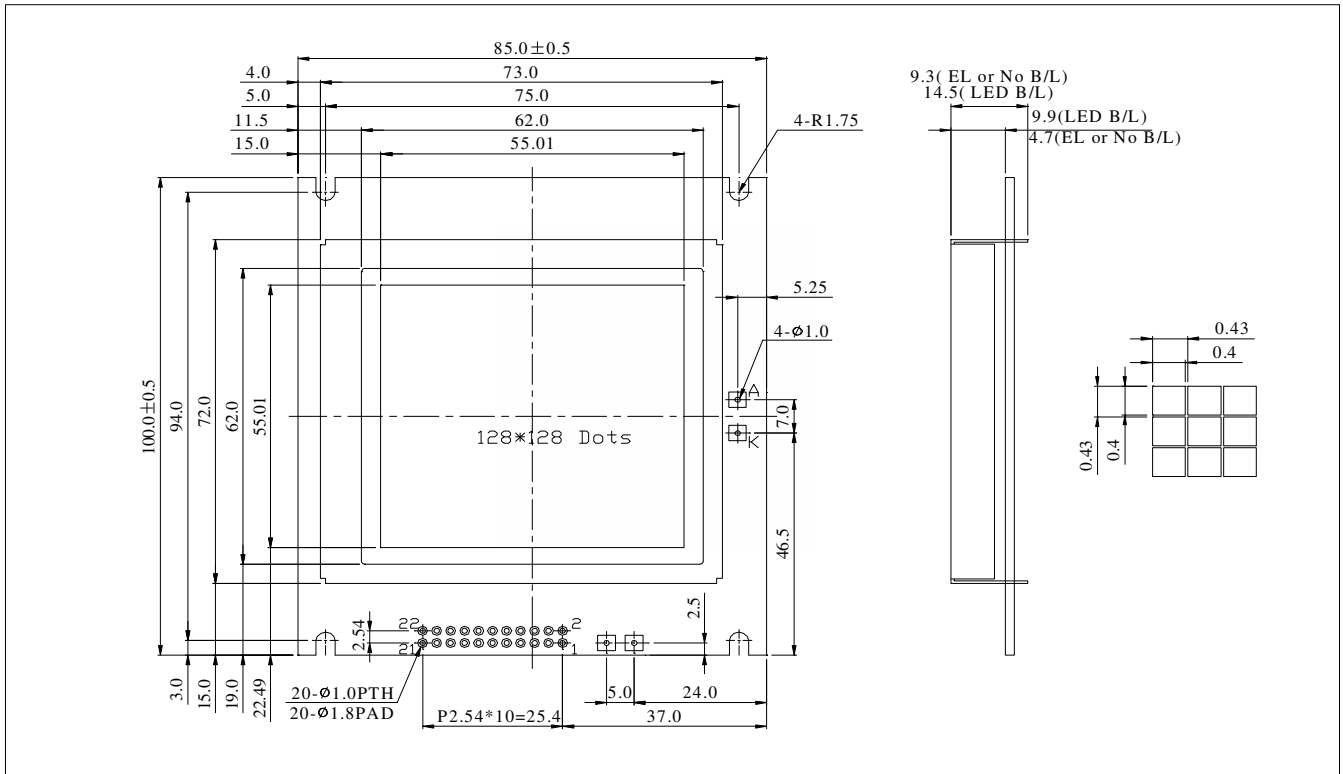


Dimension



FEATURE

1. 128*128 dots matrix
2. Logic Power +5v(+3V) Input
3. Built in T6963 Controller
4. 1/128 Duty signal scan

MECHANICAL DATA		
Item	Standard Value	Unit
Module Dimension	85.0 * 100.0	mm
Viewing Area	62.0 * 62.0	mm
Dot Pitch	0.43 * 0.43	mm
Dot Size	0.4 * 0.4	mm

INTERFACE FUNCTIONS

Pin NO	Symbol	Function
1	FGND	Frame Ground
2	VSS	Logic Power GND
3	VDD	Logic Power +5V
4	Vo	LCD Operating Volt.
5	/WR	Write Signal
6	/RD	Read Signal
7	/CE	Enable Signal
8	C/D	Command/Data Select
9	/RST	Reset Signal
11~18	DB0~DB7	Data Bus D0~D7
19	FS	6*8 or 8*8 Font Select
20	Vout	Negative Volt. Output
20	DB6	Data Bus
21	A	LED Backlight V+
22	K	LED Backlight V-

ABSOLUTE MAXIMUM RATING					
Item	Symbol	Standard Value			Unit
		min	typ	max	
Power Supply	VDD-VSS	2.5	5.0	5.5	V
Input Voltage	VIH	0.7Vdd	Vdd	Vdd+0.3	V

ELECTRONICAL CHARACTERISTICS						
Item	Symbol	Condition	Standard Value			Unit
			min	typ	max	
Input Voltage	VDD	25°C	2.7	5.0	5.3	V
Supply Current	IDD	25°C	15.0	25.0	30.0	mA
LCD Driving Voltage for	VDD-VO	-20°C	18.5	19.0	19.5	V
		0°C	17.5	18.0	18.5	
		25°C	16.4	17.0	17.8	
		50°C	15.5	16.0	16.5	
LED Forward Voltage	VF	25°C	4.0	4.2	4.5	V
LED Forward Current	IF	25°C	300	500	800	mA