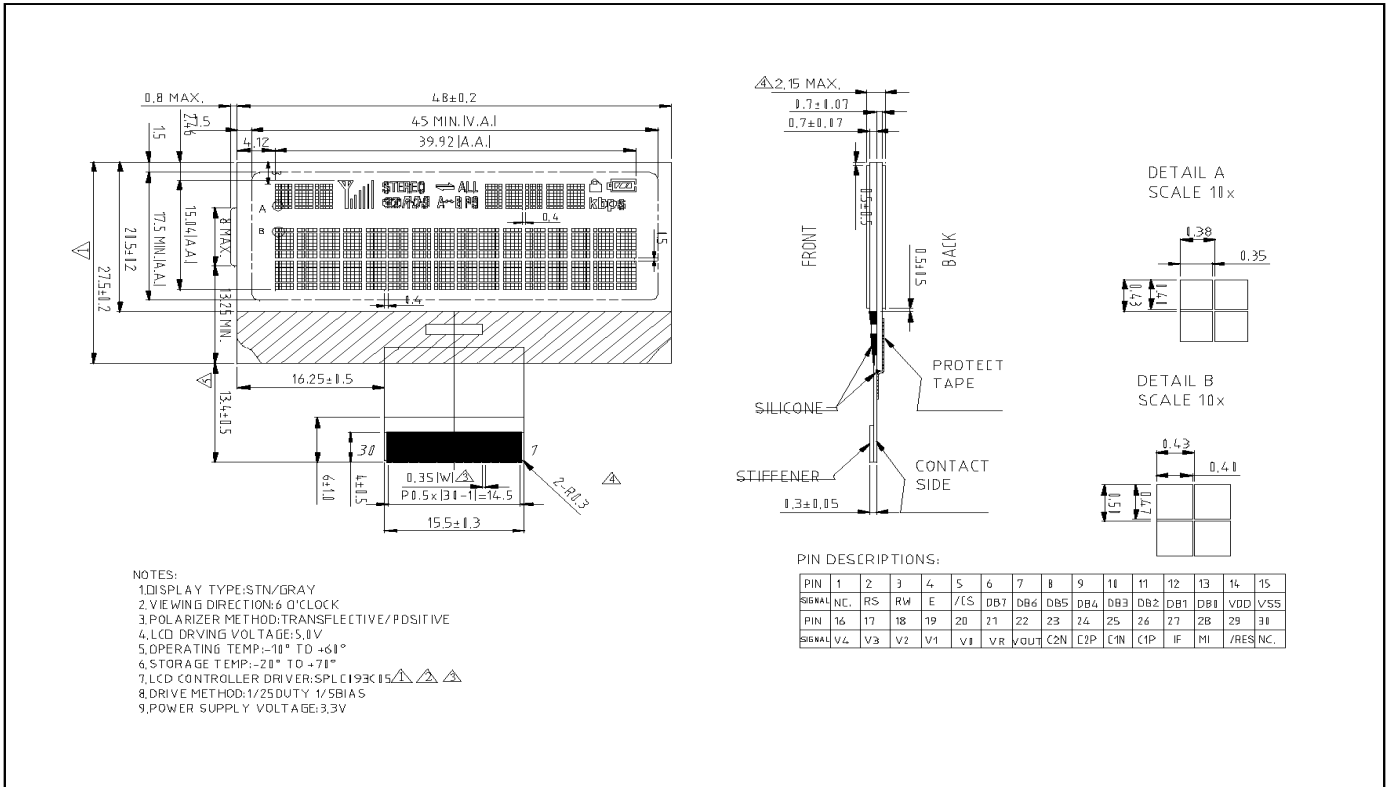


Dimension



FEATURE

1. STN, Positive, Transflective, Backlight: NA
2. IC: SPLC093C-05
3. 1/25 Duty, 1/5 Bias, 6 O'clock
4. Display dot: Blue, Background: Gray

INTERFACE FUNCTIONS

Pin NO	Symbol	Pin NO	Symbol
1	NC	16	V4
2	RS	17	V3
3	RW	18	V2
4	E	19	V1
5	/CS	20	V0
6	DB7	21	VR
7	DB6	22	VOUT
8	DB5	23	C2N
9	DB4	24	C2P
10	DB3	25	C1N
11	DB2	26	C1P
12	DB1	27	IF
13	DB0	28	MI
14	VDD	29	/RES
15	VSS	30	NC

MECHANICAL DATA		
Item	Standard Value	Unit
Module Dimension	48.0(W) × 40.9(H) × 2.15MAX(T)	mm
Viewing Area	45.0(W) × 17.5(H)	mm
Dot Size *A	0.35(W) × 0.40(H)	mm
Dot Size *B	0.38(W) × 0.43(H)	mm
Dot Pitch*A	0.38(W) × 0.43(H)	mm
Dot Pitch*B	0.43(W) × 0.50(H)	mm

ABSOLUTE MAXIMUM RATING					
Item	Symbol	Standard Value			Unit
		min	typ	max	
Supply Voltage For Logic	VDD-VSS	-0.3	—	+7.0	V
Input Voltage	VIN	-0.3	—	VDD+0.3	V

ELECTRONICAL CHARACTERISTICS						
Item	Symbol	Condition	Standard Value			Unit
			min	typ	max	
Input Voltage	VIH	H Level	0.8VDD	—	VDD	V
	VIL	L Level	VSS	—	0.2VDD	
Supply Current	IDD	VDD=3V	—	0.36	1	mA
Supply Voltage For Logic	VDD-VSS	—	2.4	3.3	5.5	V
Supply Voltage For LCD	VDD-V5	—	4.5	5.0	5.5	V