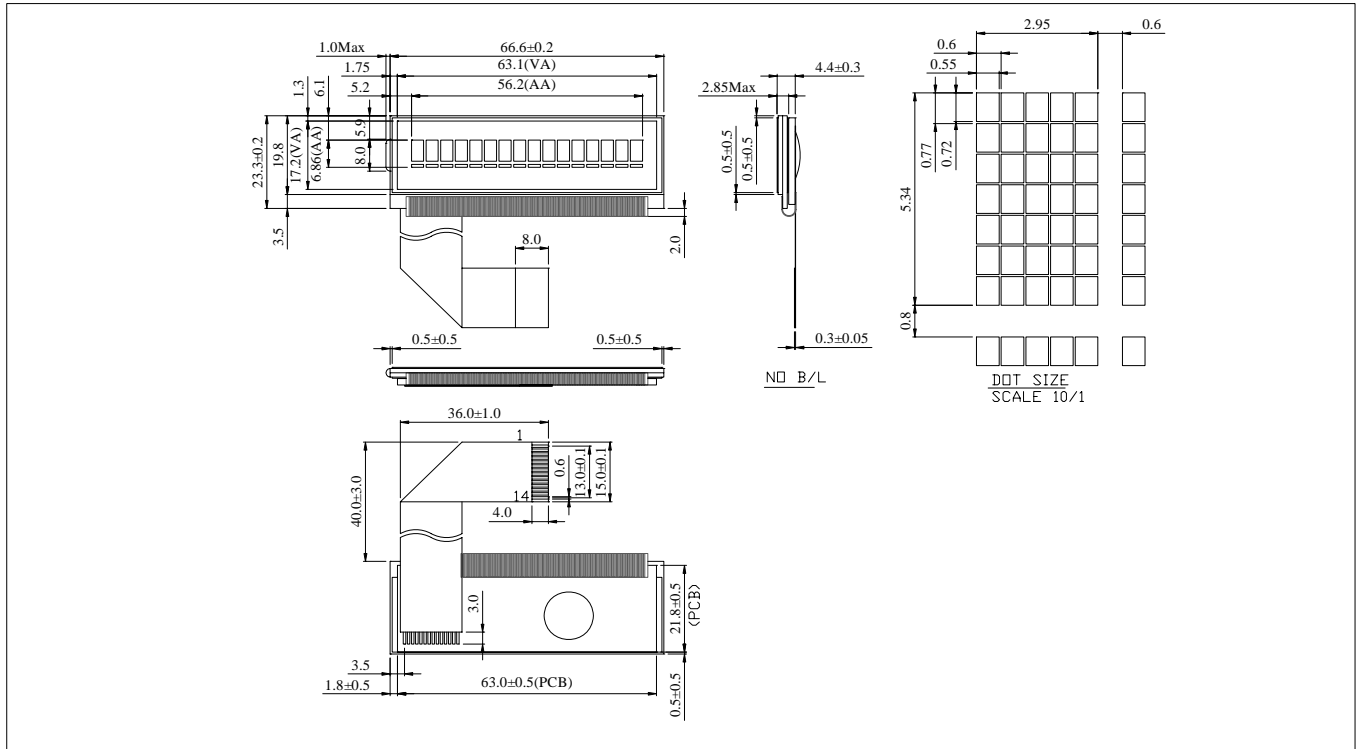


Dimension



FEATURE

1. 5X8 dots character
2. Logic Power +5V(+3V) Input
3. Built in ST7066U Controller
4. 1/16 Duty

MECHANICAL DATA		
Item	Standard Value	Unit
Module Dimension	66.6 * 23.3	mm
Viewing Area	63.1 * 17.2	mm
Character Size	2.95 * 5.34	mm
Dot Size	0.55 * 0.72	mm

INTERFACE FUNCTIONS

Pin NO	Symbol	Function
1	VDD	5V Logic
2	VO	LCD Operating Volt.
3	RS	Command/Data Select
4	RW	Read/Write
5	E	Enable
6	D0	Data Bus
7	D1	Data Bus
8	D2	Data Bus
9	D3	Data Bus
10	D4	Data Bus
11	D5	Data Bus
12	D6	Data Bus
13	D7	Data Bus
14	VSS	0V

ABSOLUTE MAXIMUM RATING					
Item	Symbol	Standard Value			Unit
		min	typ	max	
Power Supply	VDD-VSS	2.5	5.0	5.5	V
Input Voltage	VIH	0.7Vdd	Vdd	Vdd+0.3	V

ELECTRONICAL CHARACTERISTICS						
Item	Symbol	Condition	Standard Value			Unit
			min	typ	max	
Input Voltage	VDD	25°C	2.7	5.0	5.3	V
Supply Current	IDD	25°C	0.8	1.0	1.2	mA
LCD Driving Voltage for	VDD-VO	0°C	4.5	4.7	4.9	V
		25°C	4.4	4.5	4.7	
		50°C	4.0	4.2	4.4	
LED Forward Voltage	VF			None		V
LED Forward Current	IF			None		mA